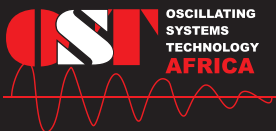
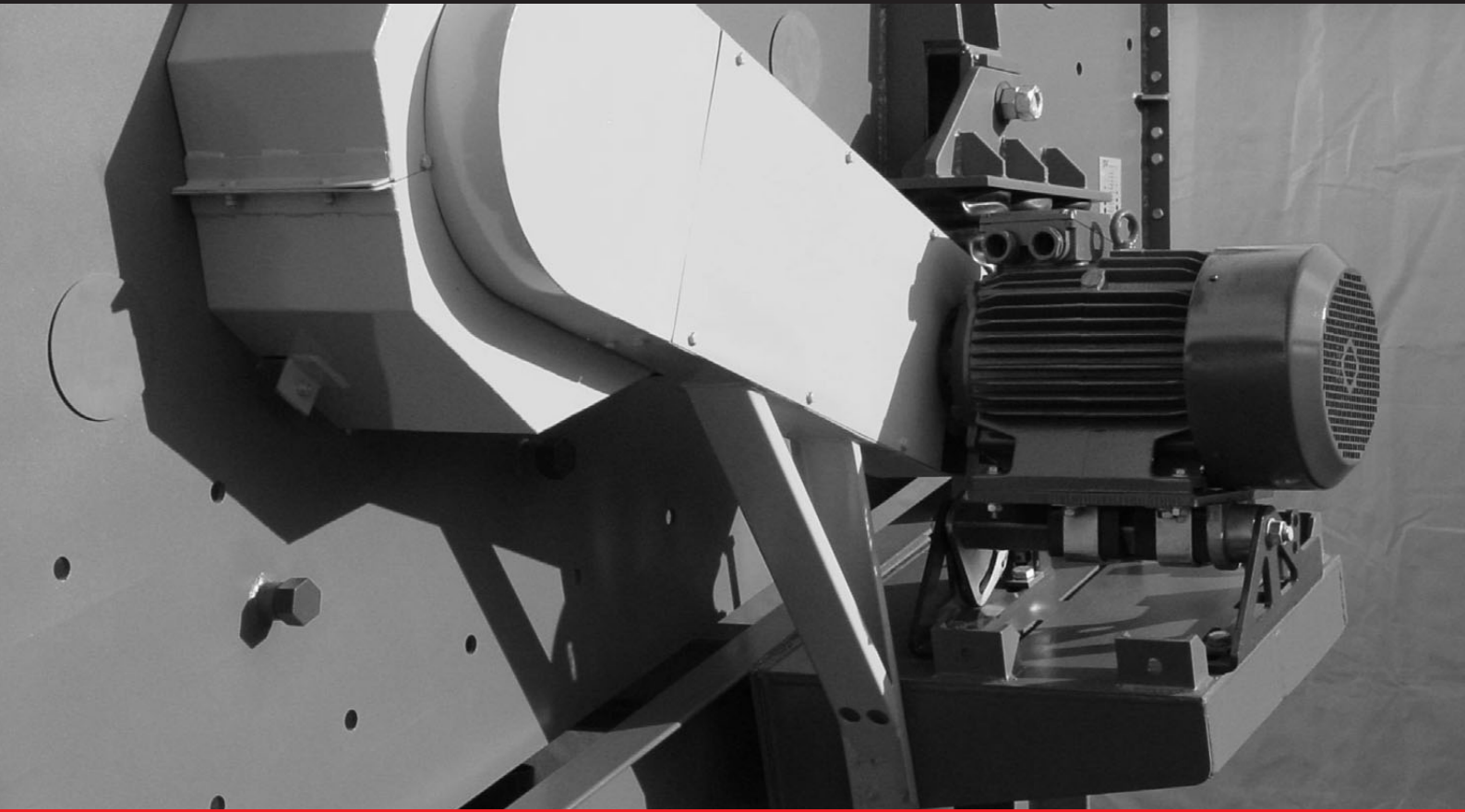


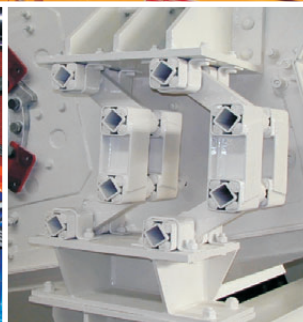
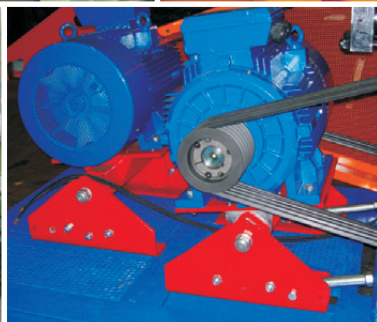
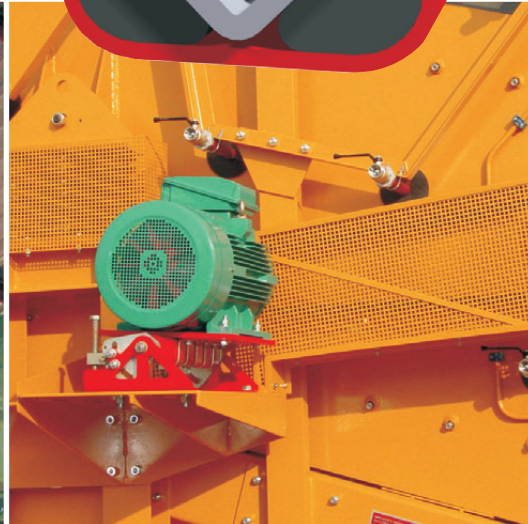


BEARING MAN GROUP



# OST PRODUCT OVERVIEW

## Technical Guide



**OST** OSCILLATING  
SYSTEMS  
TECHNOLOGY  
AFRICA

# INDEX

VIBRATOR MOTORS	1-2
SELF TENSIONING MOTOR BASE	3-5
TENSIONING ELEMENTS	6
SPROCKETS	7
RIDERS & ROLLERS	8
SCREEN MOUNTS	9-10



## MINI 3000rpm 50Hz

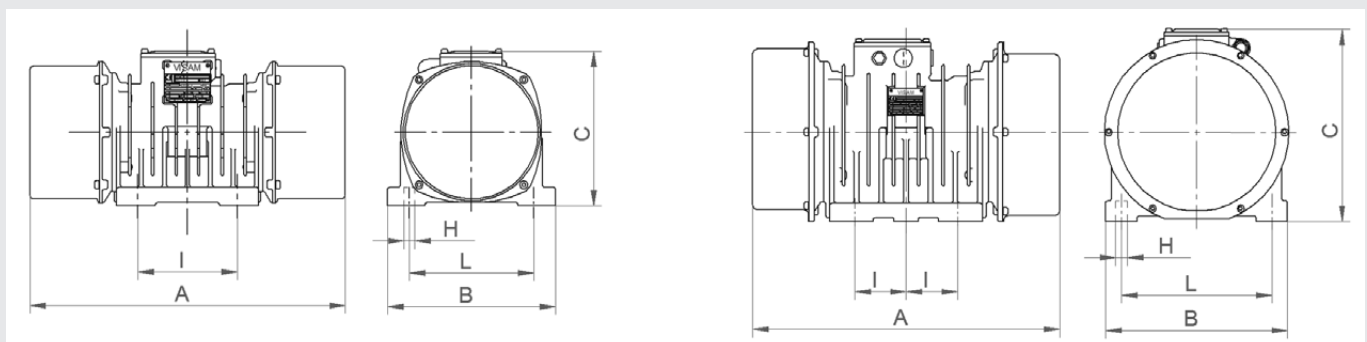
Model	Frame Size	Stat.Mom.	CF	Power	A	B	C	I	L	H	Mass	Current
		Kgmm	Kg	kW						nr.x		
		(50Hz)	(50Hz)	(50Hz)						Ø		
AM 2/0.3T	0.1	2.5	25	0.025	146	111	67	32	92	4x7	1.5	0,25
AM 2/0.3M	0.1	2.5	25	0.025	146	111	67	32	92	4x7	1.5	0,25

## 2 POLE 3000rpm 50Hz

Model	Frame Size	Stat.Mom.	CF	Power	A	B	C	I	L	H	Mass	Current
		Kgmm	Kg	kW						nr.x		
		(50Hz)	(50Hz)	(50Hz)						Ø		
SPV 1.2A	2.0	12	125	0.18	212	150	143	60-75	106	4x9	4.7	0,4
SPV 1.8A	2.1	22	219	0.19	235	150	143	60-75	106	4x9	4.8	0,4
SPV 2.7A	3.0	33	336	0.28	264	160	175	90	125	4x13	8.5	0,6
SPV 4.5A	4.0	49	495	0.51	304	190	204	100	155	4x13	15	1,0
SPV 7.0A	5.0	79	792	0.70	348	213	215	115	170	4x17	21	1,2
SPV 9.0A	6.0	100	1006	1.06	376	233	235	120	180	4x17	26	1,8
SPV 12.0A	6.1	133	1341	1.30	376	233	235	120	180	4x17	28	2,1
SPV 15.0A	7.0	183	1844	1.55	415	245	247	150	190	4x17	45	2,4
SPV 19.0A	8.0	228	2295	2.00	443	251	253	160	200	4x17	53	3,1
SPV 25.0A	9.0	280	2815	2.40	558	273	275	165	230	4x22	73	3,8
SPV 32.0A	10.0	404	4069	4.00	578	337	340	165	270	4x25	107	6,3
SPV 50.0A	11.0	560	5639	5.50	622	362	365	210	295	4x29	153	8,6
SPV 60.0A	12.0	679	6827	7.00	664	390	392	110	310	6x29	179	11,2
SPV 70.0A	12.9	774	7788	8.40	694	390	424	115	320	6x29	225	13,5
SPV 85.0A	13.0	951	8566	9.00	719	390	424	115	320	6x29	247	14,8

## 4 POLE 3000rpm 50Hz

Model	Frame Size	Stat.Mom.	CF	Power	A	B	C	I	L	H	Mass	Current
		Kgmm	Kg	kW						nr.x		
		(50Hz)	(50Hz)	(50Hz)						Ø		
SPV 0.5B	2.0	22	55	0.09	212	150	143	60-75	106	4x9	5.3	0,3
SPV 0.8B	2.1	34	86	0.10	235	150	143	60-75	106	4x9	5.7	0,3
SPV 2.2B	3.0	106	266	0.20	334	160	175	90	125	4x13	10.5	0,5
SPV 3.8B	4.0	174	437	0.35	380	190	204	100	155	4x13	20	0,7
SPV 5.1B	4.1	237	596	0.43	416	190	204	100	155	4x13	23	0,8
SPV 6.7B	5.0	298	750	0.55	400	213	215	115	170	4x17	26.5	0,9
SPV 10.0B	6.0	449	1128	1.00	440	233	235	120	180	4x17	36.5	1,7
SPV 10.0BC/I	6.0	449	1015	1.00	440	225	235	120	180	4x17	36.5	1,3
SPV 15.0B	7.0	673	1693	1.20	473	245	247	150	190	4x17	56.5	2,2
SPV 20.0B	8.0	902	2269	1.40	519	251	253	160	200	4x17	68	2,4
SPV 25.5B	9.0	1159	2916	1.90	558	273	275	165	230	4x22	90	3,5
SPV 35.0B	10.0	1570	3949	2.40	578	337	340	165	270	4x25	126.5	4,9
SPV 47.5B	11.0	2103	5288	3.50	622	362	365	210	295	4x29	166	5,8
SPV 55.0B	12.0	2301	5787	4.50	664	390	392	110	310	6x29	198	7,4
SPV 63.0B	12.9	2797	7035	6.10	694	390	424	115	320	6x29	242	10,0
SPV 77.0B	13.0	3382	8507	7.10	719	390	424	115	320	6x29	265	11,9
SPV 83.0B	14.0	3810	9584	7.80	732	455	455	130	380	6x32	314	12,4
SPV105.0B	14.1	4921	12377	10.70	738	455	455	130	380	6x32	332	17,6



## 6 POLE 1000rpm 50Hz

Model	Frame Size	Stat.Mom.	CF	Power	A	B	C	I	L	H	Mass Kg	Current A
		Kgmm	Kg	kW						nr.x		
		(50Hz)	(50Hz)	(50Hz)						Ø		
					mm							
SPV1.1C	3.0	106	118	0.16	334	160	175	90	125	4x13	10.5	0.4
SPV1.4C	3.1	146	163	0.18	358	160	175	90	125	4x13	14	0.4
SPV1.7C	4.0	174	194	0.28	380	190	204	100	155	4x13	20	0.5
SPV2.2C	4.1	237	265	0.30	416	190	204	100	155	4x13	22.5	0.7
SPV3.8C	5.0	397	444	0.45	438	213	215	115	170	4x17	29	1.1
SPV5.0C	6.0	516	576	0.80	464	233	235	120	180	4x17	39.5	1.5
SPV8.0C	7.0	848	948	0.90	509	245	247	150	190	4x17	60	1.8
SPV12.0C	8.0	1213	1356	1.00	583	251	253	160	200	4x17	77	2.1
SPV17.0C	9.0	1762	1969	1.50	630	273	275	165	230	4x22	105.5	2.8
SPV27.0C	10.0	2740	3063	2.27	674	337	340	165	270	4x25	151	5.0
SPV35.5C	11.0	3551	3970	2.70	706	362	365	210	295	4x29	189	5.8
SPV41.5C	11.1	4228	4726	3.30	706	362	365	210	295	4x29	206	6.8
SPV50.0C	12.0	5118	5721	4.00	744	390	392	110	310	6x29	236	7.1
SPV61.0C	12.9	6048	6761	5.30	774	390	424	115	320	6x29	294	9.4
SPV80.0C	13.0	7906	8838	7.60	879	390	424	115	320	6x29	340	13.1
SPV90.5C	14.0	9134	10211	8.00	906	455	455	130	380	6x32	385	13.4
SPV114.0C	14.1	11416	12761	9.80	982	455	452	130	380	6x32	420	16.6
SPV122.0C	14.2	12192	13629	10.20	982	455	455	130	380	6x32	432	17.1
SPV140.0C	15.0	13772	15395	11.50	983	490	495	155	400	6x34	530	19.8
SPV160.0C	15.1	15829	17694	13.80	1040	490	495	155	400	6x34	580	24
SPV220.0C	17.1	20409	22814	19.00	1120	620	610	140	520	8x45	905	32.3

## 8 POLE 750rpm 50Hz

Model	Frame Size	Stat.Mom.	CF	Power	A	B	C	I	L	H	Mass Kg	Current A
		Kgmm	Kg	kW						nr.x		
		(50Hz)	(50Hz)	(50Hz)						Ø		
					mm							
SPV1.3D	4.1	237	149	0.28	416	190	204	100	155	4x13	22.5	0.9
SPV2.1D	5.0	397	250	0.40	438	213	215	115	170	4x17	29	0.95
SPV2.8D	6.0	516	324	0.55	464	233	235	120	180	4x17	39.5	1.5
SPV4.5D	7.0	848	533	0.60	509	245	247	150	190	4x17	60	1.7
SPV7.0D	8.0	1213	763	0.60	583	251	253	160	200	4x17	77	1.4
SPV10.0D	9.0	1762	1108	1.10	630	273	275	165	230	4x22	105.5	2.3
SPV15.5D	10.0	2740	1723	1.90	674	337	340	165	270	4x25	151	4.6
SPV20.0D	11.0	3551	2233	2.20	706	362	365	210	295	4x29	189	5.0
SPV23.5D	11.1	4228	2658	3.00	706	362	365	210	295	4x29	206	6.7
SPV28.0D	12.0	6074	3820	3.60	824	390	392	110	310	6x29	257	8
SPV42.5D	12.9	7477	4702	5.20	854	390	424	115	320	6x29	300	10
SPV56.0D	13.0	9800	6162	6.20	959	390	424	115	320	6x29	373	11.9
SPV66.5D	14.0	12011	7553	7.00	976	455	455	130	380	6x32	430	13.1
SPV78.5D	14.1	13745	8643	7.30	982	455	455	130	380	6x32	450	13.9
SPV100.0D	15.0	17793	11188	10.00	1010	490	495	155	400	6x34	585	20.9
SPV124.0D	15.1	21878	13757	11.00	1140	490	495	155	400	6x34	665	22.7
SPV200.0D	17.1	29637	18636	13.60	1120	620	610	140	520	8x45	980	26.9

## 2 POLE 3000rpm 50Hz (Single Phase) 220V

Model	Frame Size	Stat.Mom.	CF	Power	A	B	C	I	L	H	Mass Kg	Current A
		Kgmm	Kg	kW						nr.x		
		(50Hz)	(50Hz)	(50Hz)						Ø		
					mm							
SPV1.2AM	2.0	12	125	0.17	234	150	143	60-75	106	4x9	4.7	0.75
SPV1.8AM	2.1	22	219	0.18	234	150	143	60-75	106	4x9	4.8	0.8
SPV2.7AM	3.0	33	336	0.30	264	160	175	90	125	4x13	8.5	1.4
SPV4.5AM	4.0	49	495	0.50	304	190	204	100	155	4x13	15	3.1
SPV7.0AM	5.0	79	792	0.65	348	213	215	115	170	4x17	21	5.65
SPV9.0AM	6.0	100	1006	1.00	376	233	235	120	180	4x17	26	4.8
SPV12.0AM	6.1	133	1341	1.25	376	233	235	120	180	4x17	28	5.9

### FEATURES

- Relocated grease nipples for protection against damage and dust collection
- Specially designed bearings to handle bending in the shaft
- Increased temperature regulation due to strategic positioning of parts
- Spherical bearing housings for lower heat generation and less wear during bearing replacement
- Improved lubrication intervals
- Improved sealing arrangement (standard IP65)
- Quality resin around electrical connections (no cracking or melting of resin)
- Improved sealing arrangement prevents lubrication from entering electrical parts

# SELF TENSIONING MOTORBASES

## MB20

Art. No	Motor Information								Dimensions - mm					Rubber Suspension unit	Mass kg
	Description	Frame Size	2 P	4 P	6 P	8 P	Foot Mounting								
			3000 r/min	1500 r/min	1000 r/min	750 r/min			A	D	G	I	O		
MBM 211	MB20-71	71	0.37 0.75	0.25 0.55	0.18 0.25	0.09 0.12	112	90	197	0	56	125	26	20X80 L189	3.5
MBM 221	MB20-80	80	0.75 1.5	0.55 1.1	0.25 0.55	0.18 0.55	125	100	197	0	62.5	125	32	20X100 L189	3.6
MBM 231	MB20-90S	90S	1.1 1.5	0.75 1.1	0.8	0.4	140	100	197	0	70	125	40	20X120 L189	3.7
MBM 241	MB20-90L	90L	1.5 3.0	1.5 2.2	1.1	0.37 0.55	140	125	197	0	70	125	40	20X167 L189	3.8
B	C	E	F	H	L	M	P	Note: General Tolerance $\pm$ 2mm							
184	74	53	92	8.5	140	355	22	Mass only Approx. Shipping Mass							

## MB30

Art. No	Motor Information								Dimensions - mm					Rubber Suspension unit	Mass kg
	Description	Frame Size	2 P	4 P	6 P	8 P	Foot Mounting								
			3000 r/min	1500 r/min	1000 r/min	750 r/min			A	D	G	I	O		
MBL 211	MB30-100L	100L	3.0 4.0	1.2 3.0	1.5	0.75 1.1	160	140	244	0	80	140	42	30X140 L236	4.5
MBL 221	MB30-112M	112M	4.0 7.5	4.0 5.5	2.2 3.0	1.5 2.0	190	140	244	0	95	140	57	30X200 236	5.5
B	C	E	F	H	L	M	P	Note: General Tolerance $\pm$ 2mm							
48	96	68	109	10.5	176	52	21	Mass only Approx. Shipping Mass							

## MB50

Art. No	Motor Information								Dimensions - mm					Rubber Suspension unit	Mass kg
	Description	Frame Size	2 P	4 P	6 P	8 P	Foot Mounting								
			3000 r/min	1500 r/min	1000 r/min	750 r/min			A	D	G	I	O		
MBA A11	MB50-132S/M	132S/M	5.5 11.0	5.5 11.0	3.0 5.5	2.2 3.0	216	140 178	325	5 - 50	108	235	43	50x160 L305	28.3
MBA A21	MB50-160M/L	160M/L	11.0 18.5	9.2 18.5	7.5 11.0	4.0 7.5	254	210 254	405	7 - 50	127	315	45	50x200 L385	33.9
MBA A31	MB50-180M/L	180M/ L	22	18.5 22.0	15.0	9.2 11.0	279	241 279	455	11 - 60	139.5	365	72	50x270 L435	38.9
MBA A51	MB50-200M/L	200M/L	30.0 37.0	30.0 37.0	18.5 22.0	15	318	305	505	11 - 85	159	415	72	50x400 L485	44.4
MBA A61	MB50-225S/M	225S/M	45	37.0 45.0	30.0 37.0	18.5 22.0	356	286 311	605	7 - 170	178	515	72	50x500 L585	48.4
Note: General Tolerance $\pm$ 2mm															
Mass only Approx. Shipping Mass															

# SELF TENSIONING MOTORBASES

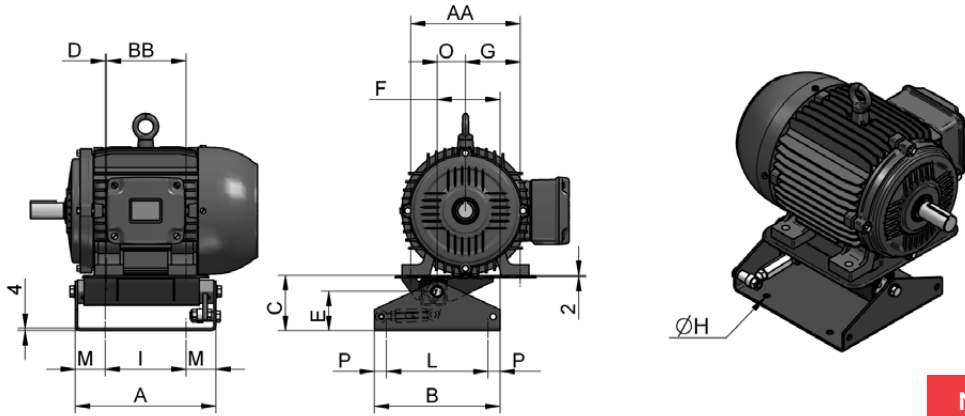
## MB70

Art. No	Motor Information								Dimensions - mm					Rubber Suspension unit	Mass kg
	Description	Frame Size	2 P	4 P	6 P	8 P	Foot Mounting								
			3000 r/min	1500 r/min	1000 r/min	750 r/min	AA	BB	A	D	G	I	O		
MBB A11	MB70-250S	250S	55	37 55	37	30	406	311	648	0 - 133	203	482	72	70X400 L600	115
MBB A21	MB70-250M	250M	55 75	37 75	37 45	30 37	406	349	748	0 - 233	203	582	72	70X500 L700	123
MBB A31	MB70-280S	280S	75 90	75 90	45 55	37 45	457	368	848	0 - 263	228.5	682	72	70X600 L800	130
MBB A41	MB70-280M	280M	90 132	90 132	55 75	45 55	457	419	948	0 - 363	228.5	782	72	70X700 L900	135
MBB A61	MB70-315S	315S	110 132	90 110	75	55	508	406	1148	0 - 525	254	982	72	70X900 L1100	166
MBB A71	MB70-315M	315M	132 150	132 150	90 110	75 90	508	457	1248	0 - 625	254	1082	72	70X1000 L1200	180
C	E	H	R	S	M	Note: General Tolerance ± 2mm									
310	230	22	20	16	83	Mass only Approx. Shipping Mass									

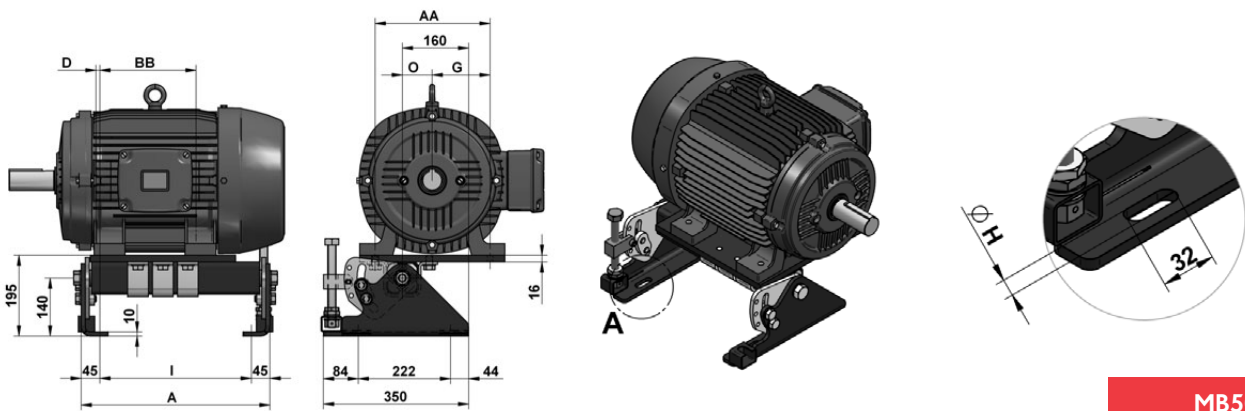
## MB100

Art. No	Motor Information								Dimensions - mm					Rubber Suspension unit	Mass kg
	Description	Frame Size	2 P	4 P	6 P	8 P	Foot Mounting								
			3000 r/min	1500 r/min	1000 r/min	750 r/min	AA	BB	A	D	G	I	O		
MBC A11	MB100-315S	315S	110 132	90 110	75	55	508	406	670	0 - 45	254	490	72	100X400 L600	194
MBC A21	MB100-315M	315M	132 150	132 150	90 110	75 90	508	457	770	0 - 145	254	590	72	100X500 L700	204
MBC A31	MB100-315L	315L	160 200	160 200	110 132	90 132	508	457/ 508	870	0 - 195	254	690	72	100X600 L800	221
MBC A41	MB100-315LX	315LX	250 315	220 315	200 250	160 200	508	508	970	0 - 295	254	790	72	100X700 L900	240
MBC A51	MB100-355S	355S	185 250	185 250	132 185	110 150	610	500	1070	0 - 275	305	890	72	100X800 L1000	275
MBC A61	MB100-355M	355M	220	260 300	200 250	160 185	610	560/ 630	1170	0 - 375	305	990	72	100X900 L1100	283
MBC A71	MB100-355L	355L	250	300 330	260 315	200 220	610	630	1270	0 - 475	305	1090	72	100X1000 L1200	285
C	E	H	R	S	M	Note: General Tolerance ± 2mm									
350	240	25	25	20	90	Mass only Approx. Shipping Mass									

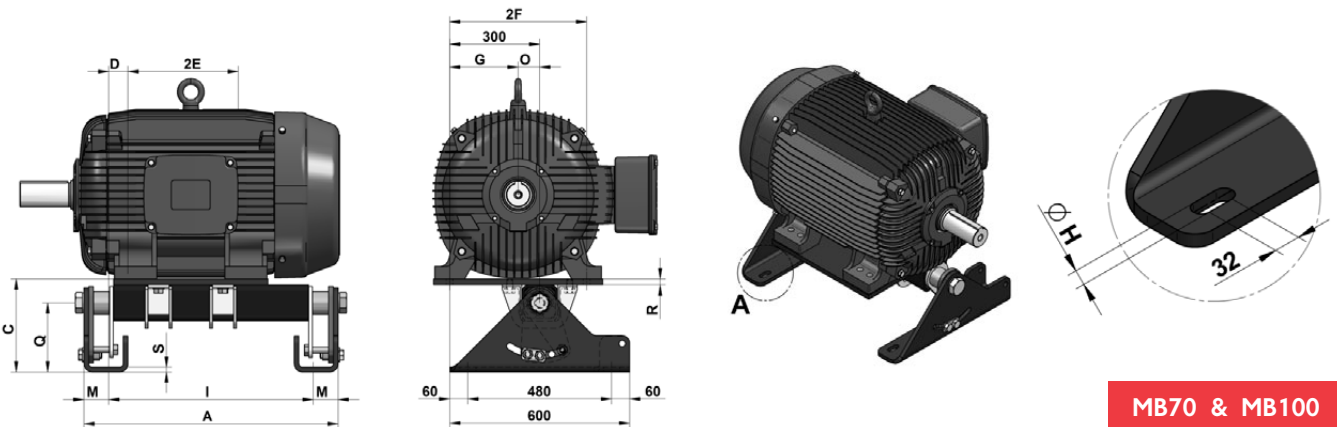
# SELF TENSIONING MOTORBASES



MB20 & MB30

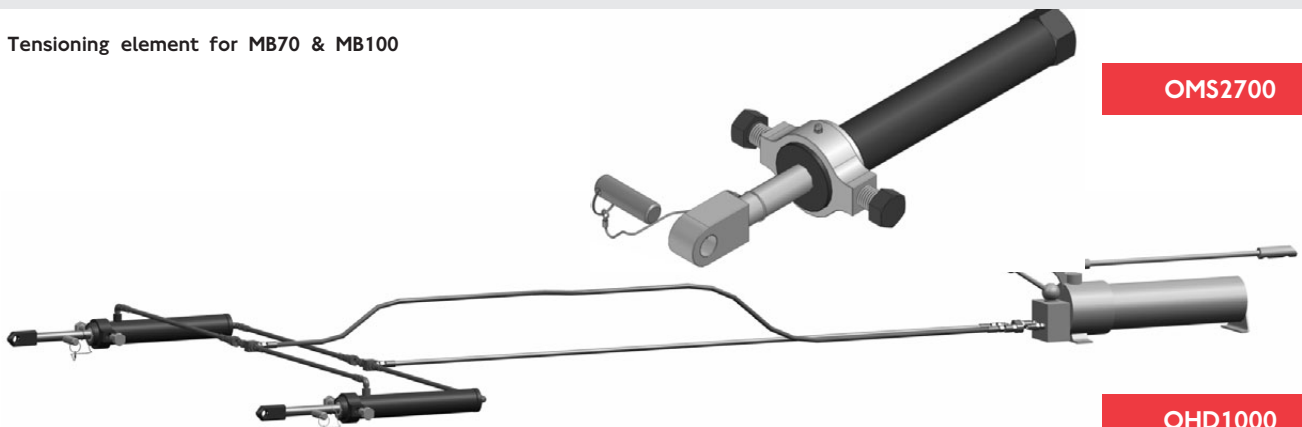


MB50



MB70 & MB100

Tensioning element for MB70 & MB100



OMS2700

OHD1000

## STANDARD TENSIONER

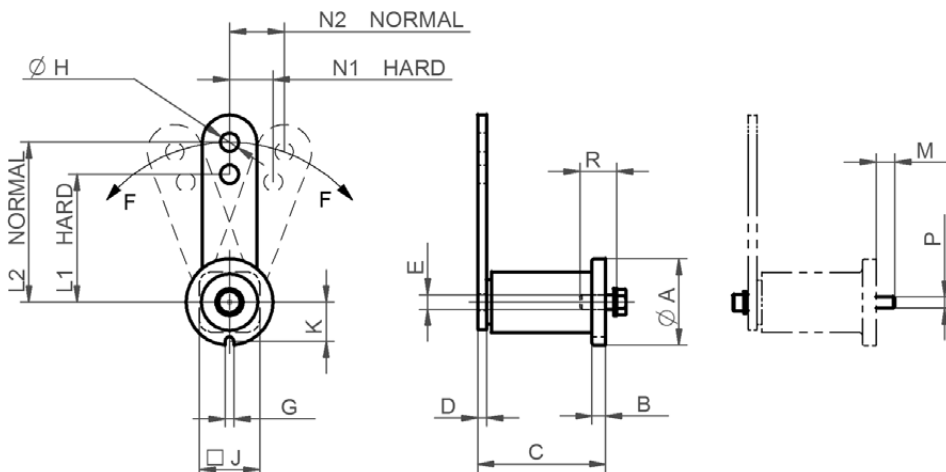
Part No	A	B	C	D	E	Tightning Torque on E Nm	G	H	J	K	L1	L2	R	Tensioning Element Type
TEJ0 030	35	6	51	5	M6	12	7	8.5	22	17	60	80	20	TE 2
TEH0 040	45	8	64	5	M8	28	7	10.5	30	21	80	100	25	TE 3
TEG0 050	58	10	78	6	M10	56	8	10.5	35	25	80	100	30	TE 4
TEF0 075	78	14	107	7	M12	98	10	12.5	52	34	100	130	40	TE 5
TEE0 100	95	15	140	10	M16	244	10	20.5	66	43	140	175	40	TE 6
TED0 150	115	16	200	12	M20	476	12	20.5	80	50	180	225	50	TE 7
TEA0 150	130	20	210	20	M24	822	17	20.5	78	57	200	250	60	TE 8

## FRONT MOUNT TENSIONER

Part No	A	B	C	D	G	H	J	K	L1	L2	M	P	Tightning Torque on P Nm	Tensioning Element Type
TEHF 040	45	8	64	5	7	10.5	30	21	80	100	12	M6	19	TE 3F
TEGF 050	58	10	78	6	8	10.5	35	25	80	100	19	M8	46	TE 4F
TEFF 075	78	14	107	7	10	12.5	52	34	100	130	18	M10	92	TE 5F
TEEF 100	95	15	140	10	10	20.5	66	43	140	175	18	M12	160	TE 6F
TEDF 150	115	16	200	12	12	20.5	80	50	180	225	33	M16	397	TE 7F
TEAF 150	130	20	210	20	17	20.5	78	57	200	250	23	M20	775	TE 8F

## TENSIONING FORCES

Standard Tensioner Part No.	Front Mount Tensioner Part No.	Weight in Kg	Force F in Newton				Deflection S in mm				Tensioning Element Type
			Hard (L1)		Normal (L2)		Hard (N1)		Normal (N2)		
			Ideal Force	Max. Force	Ideal Fore	Max. Force	Ideal Force	Max. Force	Ideal Force	Max. Force	
TEJ0 030	-	0.25	30 - 55	100	25 - 40	75	15 - 20	30	20 - 30	40	TE 2
TEH0 040	TEHF 040	0.40	50 - 80	165	40 - 65	130	20 - 30	40	25 - 35	50	TE 3
TEG0 050	TEGF 050	0.70	170 - 225	470	135 - 200	380	20 - 30	40	25 - 35	50	TE 4
TEF0 075	TEFF 075	2.00	330 - 505	1070	250 - 390	820	25 - 35	50	35 - 45	65	TE 5
TEE0 100	TEEF 100	4.00	600 - 930	1930	480 - 745	1540	35 - 50	70	45 - 60	88	TE 6
TED0 150	TEDF 150	8.00	1085 - 1670	3330	865 - 1335	2670	45 - 65	90	60 - 80	113	TE 7
TEA0 150	TEAF 150	10.00	1260 - 2125	4875	1010 - 1700	3900	50 - 70	101	65 - 85	126	TE 8



## SIMPLEX "S"

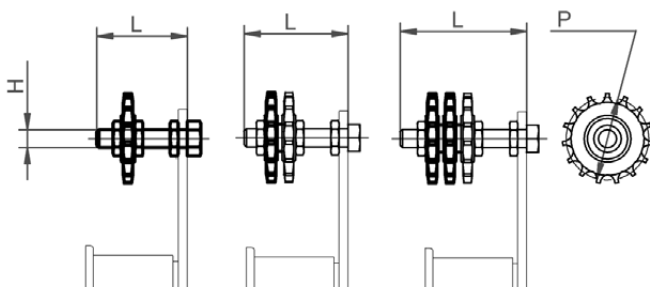
Sprocket Part No	Pitch	Roller Chain DIN 8187	No. of Teeth	Dimensions mm			Tensioning Element Type
				H	L	P	
SP 038-10S	3/8"	ISO 06 B-1	15	M10	55	46	TE 3/4
SP 012-10S	1/2"	ISO 08 B-1	15	M10	55	61	TE 4
SP 058-12S	5/8"	ISO 10 B-1	15	M12	80	77	TE 5
SP 034-12S	3/4"	ISO 12 B-1	15	M12	80	92	TE 5
SP 034-20S				M20	120	92	TE 6
SP 100-20S	1"	ISO 16 B-1	13	M20	120	106	TE 6
SP 114-20S	1 1/4"	ISO 20 B-1	13	M20	160	133	TE 7/8
SP 112-20S	1 1/2"	ISO 24 B-1	11	M20	180	135	TE 7/8

## DUPLEX "D"

Sprocket Part No	Pitch	Roller Chain DIN 8187	No. of Teeth	Dimensions mm			Tensioning Element Type
				H	L	P	
SP 038-10D	3/8"	ISO 06 B-2	15	M10	55	46	TE 3/4
SP 012-10D	1/2"	ISO 08 B-2	15	M10	55	61	TE 4
SP 058-12D	5/8"	ISO 10 B-2	15	M12	80	77	TE 5
SP 034-12D	3/4"	ISO 12 B-2	15	M12	80	92	TE 5
SP 034-20D				M20	120	92	TE 6
SP 100-20D	1"	ISO 16 B-2	13	M20	120	106	TE 6
SP 114-20D	1 1/4"	ISO 20 B-2	13	M20	160	133	TE 7/8
SP 112-20D	1 1/2"	ISO 24 B-2	11	M20	180	135	TE 7/8

## TRIPLEX "T"

Sprocket Part No	Pitch	Roller Chain DIN 8187	No. of Teeth	Dimensions mm			Tensioning Element Type
				H	L	P	
SP 038-10T	3/8"	ISO 06 B-3	15	M10	70	46	TE 4
SP 012-12T	1/2"	ISO 08 B-3	15	M12	80	61	TE 5
SP 058-12T	5/8"	ISO 10 B-3	15	M12	80	77	TE 5
SP 058-20T				M20	120	77	TE 6
SP 034-20T	3/4"	ISO 12 B-3	15	M20	120	92	TE 6
SP 100-20T	1"	ISO 16 B-3	13	M20	160	106	TE 7
SP 114-20T	1 1/4"	ISO 20 B-3	13	M20	160	133	TE 7/8
SP 112-20T	1 1/2"	ISO 24 B-3	11	M20	180	135	TE 7/8

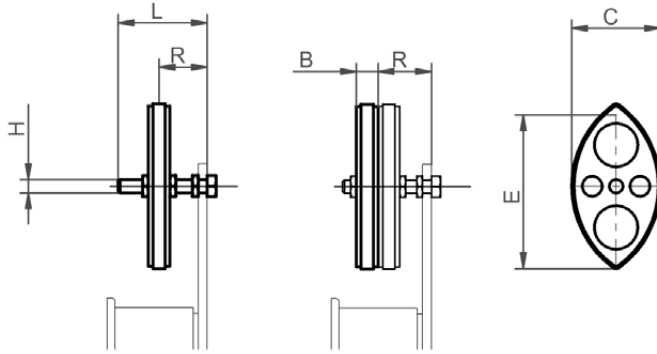


## SIMPLEX "S"

Part No.	Weight in kg	Pitch	Roller Chain DIN 8187	Dimensions - mm					Adjusting Range R	Tensioning Element Type
				B	C	E	H	L		
RC 038-08S	0.06	3/8"	ISO O6B-1	10.2	40	75	M8	45	15 - 34	TE 2
RC 012-10S	0.13	1/2"	ISO 08B-1	13.9	50	95	M10	55	23 - 41	TE 3/4
RC 058-10S	0.18	5/8"	ISO 10B-1	16.6	65	125	M10	60	24 - 44	TE 3/4
RC 034-12S	0.32	3/4"	ISO 12B-1	19.5	75	150	M12	80	30 - 61	TE 5

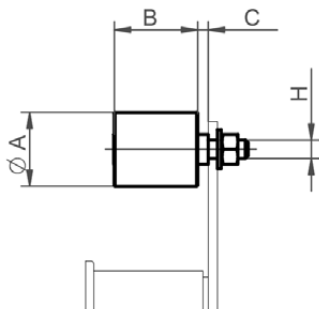
## DUPLEX "D"

Part No	Weight in kg	Pitch	Roller Chain DIN 8187	Dimensions - mm					Adjusting Range R	Tensioning Element Type
				B	C	E	H	L		
RC 038-08D	0.09	3/8"	ISO O6B-2	10.2	40	75	M8	45	25 - 30	TE 2
RC 012-10D	0.19	1/2"	ISO 08B-2	13.9	50	95	M10	55	30 - 34	TE 3/4
RC 058-10D	0.29	5/8"	ISO 10B-2	16.6	65	125	M10	60	34 - 36	TE 3/4
RC 034-12D	0.52	3/4"	ISO 12B-2	19.5	75	150	M12	80	40 - 52	TE 5



## ROLLER SETS

Part Nb	Weight in kg	Max Speed r/min	Dimensions - mm				Use with Tensioning Element Type
			A	B	C	H	
ROJ0 030	0.08	8000	30	35	2	M8	TE 2
ROH0 045	0.17	8000	40	45	6	M10	TE 3 / 4
ROF0 060	0.4	6000	60	60	7	M12	TE 5
ROE0 090	1.15	5000	80	90	8.5	M16	TE 6
ROD0 135	1.75	4500	90	135	10	M20	TE 7/8



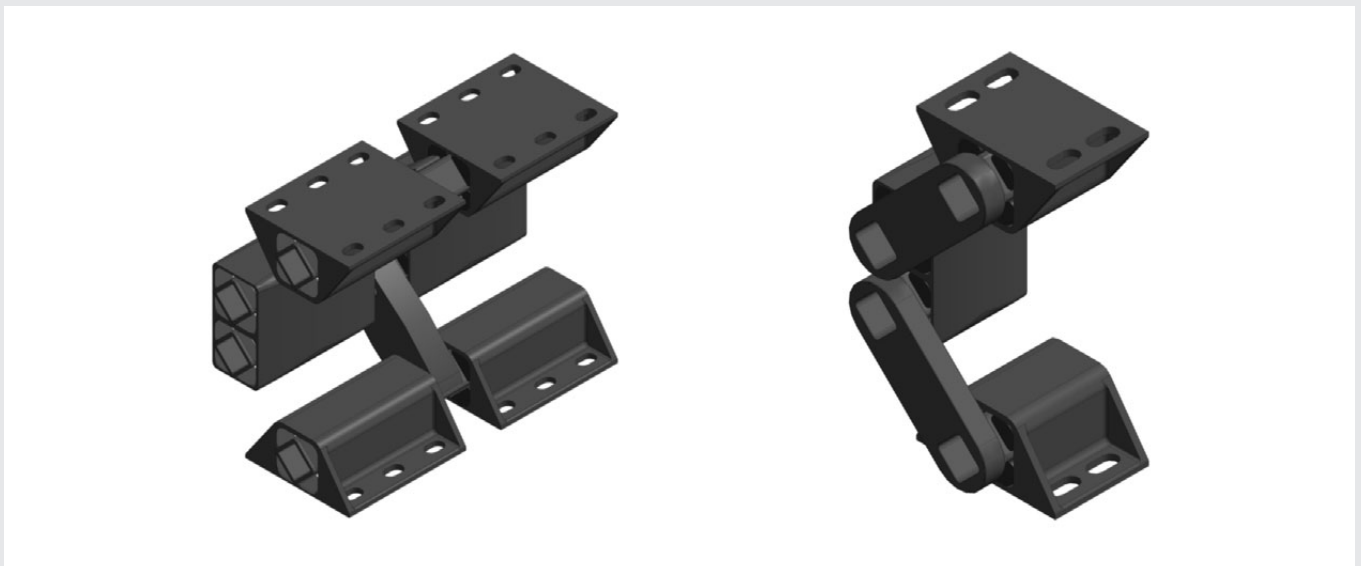
# SCREEN MOUNTS

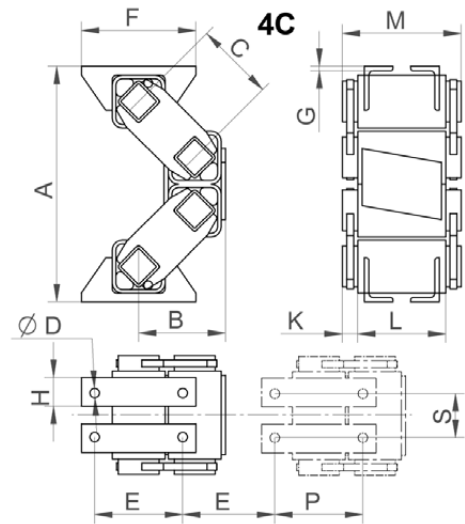
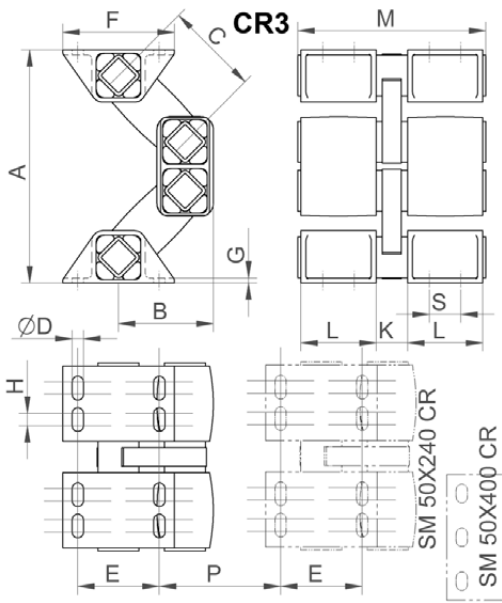
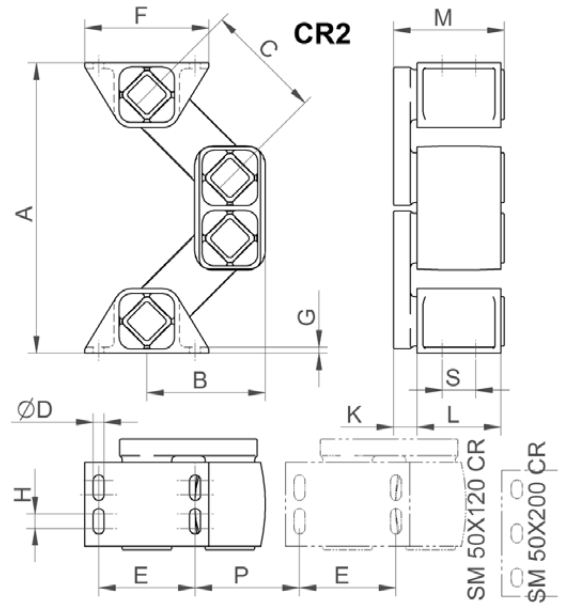
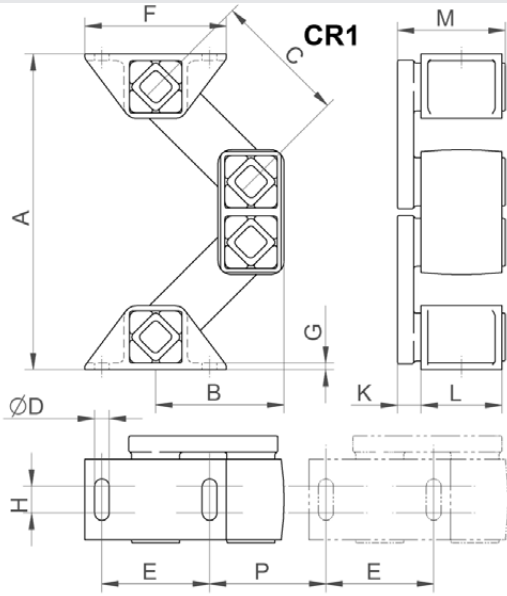
Description	Load		Spring Rate Vertical Dynamic	Natural Frequency Vertical	Spring Rate Horizontal Dynamic	Natural Frequency Horizontal	Unloaded Height 'A'	Loaded Height 'A'	Saturation / Replacement Height 'A'	Art No
	Min	Max								
	≈kN									
SM 15X40 CR	0.10	0.21	10	2.8	5	2.4	167	139 - 116	103	SMH4 040CR
SM 18X50 CR	0.25	0.46	18	2.4	13	2.0	206	171 - 143	126	SMG4 050CR
SM 27X60 CR	0.53	1.05	39	2.6	23	1.8	235	200 - 172	155	SMF4 060CR
SM 38X80 CR	1.07	2.15	57	2.3	27	1.6	301	257 - 222	201	SME4 080CR
SM 45X100 CR	1.96	3.67	97	2.1	47	1.4	346	296 - 257	235	SMD4 100CR
SM 50X120 CR	2.66	5.88	189	2.4	79	1.5	353	319 - 277	253	SMA4 120CR
SM 50X200 CR	4.43	10.14	307	2.3	130	1.6	332	319 - 277	253	SMA4 200CR
SM 50X240 CR	5.12	11.76	362	2.4	138	1.8	319	319 - 277	253	SMA4 240CR
SM 50X400 CR	8.05	18.82	614	2.3	254	1.6	314	319 - 277	253	SMA4 400CR
SM 70X200 R	6.80	15.13	378	2.1	207	1.1	535	471 - 421	392	SMB4 200R

\*\*\*NOTE: FOR MAX EFFICIENCY AND LIFE SPAN ALWAYS SELECT LOAD RATING NOT MORE THAN 80% OF MAX LOAD

Description	Type	Dimensions In mm													Packing Weight kg
		B Unloaded	B Max Loaded	C	Ø D	E	F	G	H	K	L	M	P	S	
SM 15X40 CR	CR1	72	93	80	7	50	66	3	15	12	40	53	60	-	0.9
SM 18X50 CR	CR1	89	115	100	9	60	80	4	20	14	50	67	75	-	1.8
SM 27X60 CR	CR1	95	121	100	11	80	105	5	20	18	60	80	80	-	3.9
SM 38X80 CR	CR2	121	153	125	13	100	125	6	12	23	80	107	100	32	7.9
SM 45X100 CR	CR2	141	177	140	13	115	148	7	18	28	100	132	115	40	12.9
SM 50X120 CR	CR2	151	190	150	18	130	178	8	20	35	120	160	130	50	18.2
SM 50X200 CR	CR2	151	190	150	18	130	178	8	20	40	200	245	130	70	30
SM 50X240 CR	CR3	151	190	150	18	130	178	8	20	50	120	300	130	50	35
SM 50X400 CR	CR3	151	190	150	18	130	178	8	20	60	200	470	130	70	54
SM 70X200 R	4C	197	241	180	22	200	260	9	65	35	200	270	200	100	70

DIMENSION GENERAL TOLERANCE ± 2 mm









24 HR TOLL-FREE EMERGENCY  
BRANCH HELPLINE:

**0800 022 224**

WEBSITE:

**[www.bmgworld.net](http://www.bmgworld.net)**



BEARING MAN GROUP

BEARINGS • SEALS • POWER TRANSMISSION • BELTING  
DRIVES & MOTORS • FASTENERS • FILTRATION • HYDRAULICS

**SANS** ISO 9001:2008