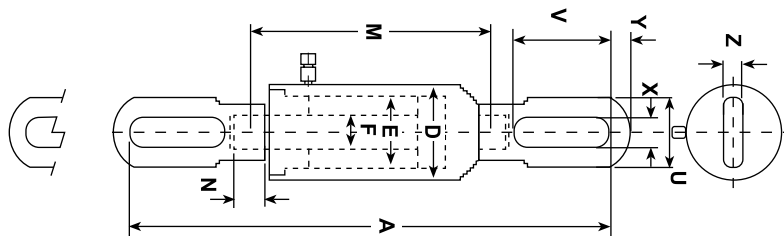


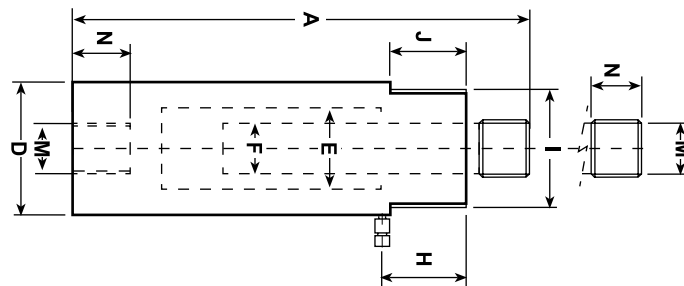
T, TE & TD Series Pull Cylinders



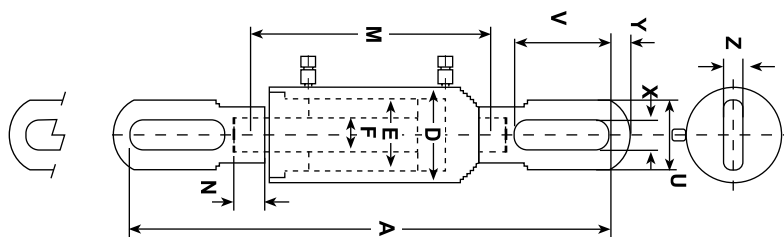
- Spring Return
- 5 to 50 Ton Capacity
- 700 Bar
- Designed for any application requiring pulling forces, for example to hook and join sheets for welding, tighten cables, etc.
- High strength steel construction. Hard chrome-plated piston. Optional metallic joint for piston protection and longer life
- *Models equipped with optional metallic joint have a 30 mm shorter stroke



T Series



TE Series



TD Series

Pull Cylinders

Capacity Tn	Stroke mm	Part Number	Oil Cap. cm ³	A mm	Weight Kg
5	140	T00514/5	110	306	6.7
	140	T00514/10	110	306	6.7
10	140	T01015	190	308	10
	150*	TE01015	204	576*	14.9
	150*	TD01015	356	576*	14.9
30	150*	TE03015	660	723*	32
	150*	TD03015	954	723*	32
50	150*	TE05015	1,056	757*	60
	150*	TD05015	1,425	757*	60

Capacity Tn	Area cm ²	D mm	E mm	F mm	M	N mm
5	7.9	60	45	32	3/4" BSP	25
	7.9	60	45	32	1 1/4" BSP	25
10	13.6	85	55	36	1 3/4" BSP	30
	13.5	86	55	36	M30x2	25
	13.5	86	55	36	M30x2	25
30	43.9	125	90	50	M40x2	45
	43.9	125	90	50	M40x2	45
50	70.3	148	110	56	M52x2	60
	70.3	148	110	56	M52x2	60

Capacity Tn	I mm	J mm	H mm	U mm
5	2 1/4" UNS	25	46	-
	2 1/4" UNS	25	46	-
10	3 5/16" UNS	40	55	-
	-	-	-	107
	-	-	-	107
30	-	-	-	108
	-	-	-	108
50	-	-	-	130
	-	-	-	130

Capacity Tn	V mm	X mm	Y mm	Z mm
5	-	-	-	-
	-	-	-	-
10	-	-	-	-
	109	46	30.5	30.5
	109	46	30.5	30.5
30	153	50	29	29
	153	50	29	29
50	150	50	70	39
	150	50	70	39