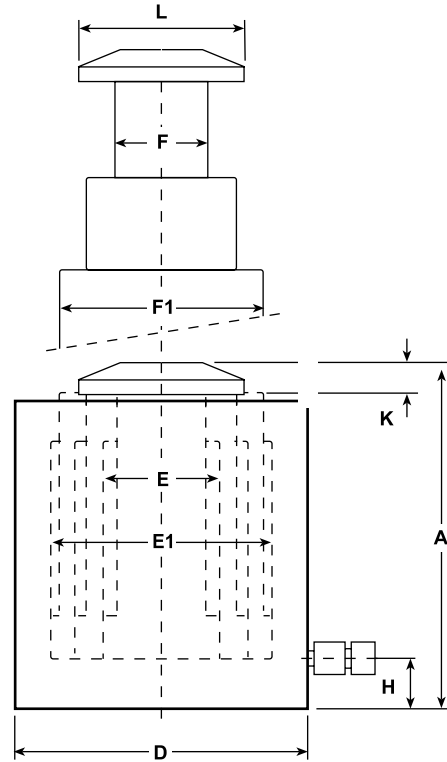


Telescopic Cylinders

SL Series Single Acting Telescopic Cylinders



- 10 to 30 Ton Capacity
- 700 Bar
- These Telescopic Single Acting Cylinders are designed for use where there is a minimum clearance for the insertion of cylinder and a very high lift is necessary
- *Capacity and stroke at each stage

Capacity Tn	Capacity kN	Stages *	Stroke mm	Area cm ²	Part Number	Oil Cap. cm ³	A mm	Weight Kg
10	109	2	270	16	SL01027	810	250	16.2
	303	1	135	44				
	109	3	435	16	SL01043	2,250	280	33.4
	303	2	290	44				
15	652	1	145	95	SL01530	1,308	280	23.4
	163	2	300	24				
	436	1	150	64	SL01550	3,543	320	50.9
	163	3	500	24				
30	436	2	340	64	SL03030	2,088	304	38.3
	842	1	170	123				
	303	2	300	44	SL03060	6,803	355	96,2
	652	1	150	95				
	1380	1	200	201				

Part Number	D mm	E mm	E1 mm	F mm	F1 mm	H mm	K mm	L mm
SL01027	110	45	75	36	68	20	16	50
SL01043	152	45	110	36	95	21	19	75
SL01530	125	55	90	50	80	25	16	66
SL01550	175	55	125	50	110	25	19	95
SL03030	152	75	110	68	100	27	18	89
SL03060	220	75	160	68	150	27	20	123