

Accumulators - Gas Valves

Gas Valves



Gas Valves

- EPE Bladders are readily interchangeable with many other brands available in the marketplace. Apart from the EPE standard range gas Valves, Special Gas Valves with non-standard stem diameters and connections are available to make this simple conversion.

Capacity (liters)	EPE Std Gas Valve Order Code
0.2	2002
0.7	2021
1	2022
1,5	2022
3	2022
5	2042
10	2062
15	2062
20	2062
25	2062
35	2062
55	2062

Please note that we carry gas valves suitable for the most common industry standards with neck sizes including: 50mm, 2", 7/8" and 22mm. Please contact the call centre for detailed information.



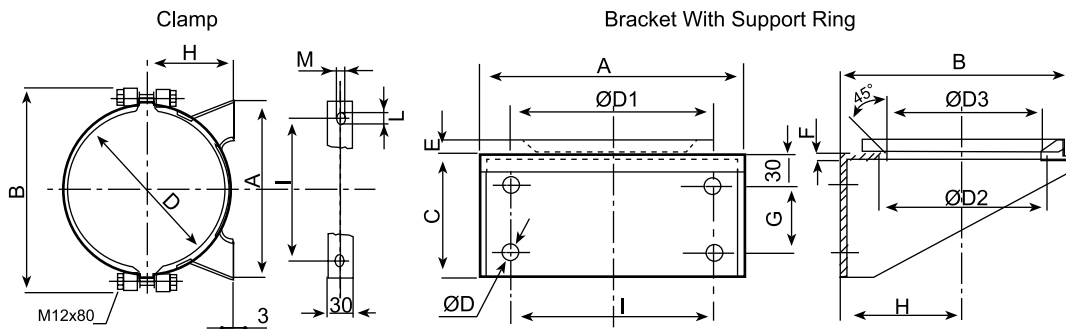
Accumulators - Support Clamps

Support Clamps and Brackets



Support Clamps and Brackets

- When fitting accumulators it is essential to avoid dangerous vibration as well as stresses on the shell and accumulator connection. This is especially important on the heavier accumulator types. Our range of support clamps and brackets provide the necessary support needed to accomplish this.
- Manufactured in galvanized steel with nitrile rubber support rings.



Clamps

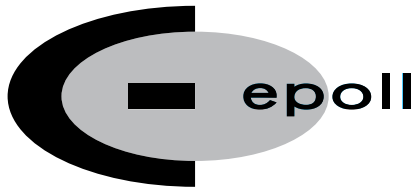
Accumulator Type	Part Number	A	B	D	H	I	L	M
AS1 to AS3	10157	135	194	114 - 122	66 - 70	100	13	9
AS5	10250	185	251	167 - 176	95 - 100	146	13	9
AS10 to AS55	10410	398	285	215 - 227	120 - 126	216	20	10

Brackets with Support Ring

Accumulator Type	Part Number	A	B	C	DØ	D3Ø	G	H	I
AS5	10263	200	175	90	11	90	40	96	140
AS10 to AS55	10363	260	232	120	17	150	70	125	200

Accumulators - Safety Blocks

Safety Blocks



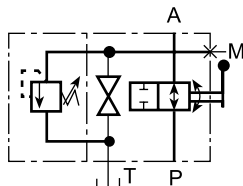
EPE Italiana s.r.l.



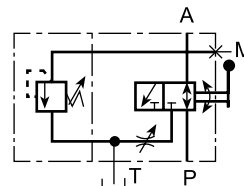
Safety Blocks

- Safety blocks allow quick and safe connection of the accumulator to a hydraulic circuit as well as protection from over pressurization. Charge pressure can be checked during operation via a 1/4" BSP diagnostic port (M).
- Blocks constructed in Phosphated Steel.
- Standard with Manual Discharge Valve, DBDS Relief Valve, and NBR Seals (Perbunan)

Block Type B25 / B32



Block Type B10 / B20



Block Type	Part Number	Relief Valve Calibration	Accumulator Side Connection (A)	Installation Side Connection (P)	Manual Discharge Connection (T)
B10	B10 MB330 G1RP	330 Bar	1 1/4" BSP	1/2" BSPF	3/8" BSP
B20	B25 MB330 GRP	330 Bar	2" BSP	3/4" BSPF	3/8" BSP
B25	BS25 MB300 GRP	300 Bar	2" BSP	1" BSPF	3/8" BSP
B32	BS32 MB300 GRP	300 Bar	2" BSP	1 1/2" BSPF	3/8" BSP