

Industrial Valves - Check Valves

In-Line Check Valves - DIN 2353 Connection Type RHD - Equal Check Valves



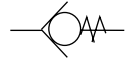
blago



Series	Bar	Part Number	Tube (mm)
L	250	RHD 6L	6
		RHD 8L	8
		RHD 10L	10
		RHD 12L	12
		RHD 15L	15
	160	RHD 18L	18
		RHD 22L	22
		RHD 28L	28
		RHD 35L	35
	100	RHD 42L	42
		RHD 6S	6
		RHD 8S	8
		RHD 10S	10
		RHD 12S	12
S	400	RHD 14S	14
		RHD 16S	16
		RHD 20S	20
		RHD 25S	25
		RHD 30S	30
	250	RHD 38S	38

In-Line Check Valves - DIN 2353 Connection

Type RHV - Male Stud Check Valves (Flow from male stud end)



Series	Bar	Part Number	Male Stud Thread	Tube (mm)	
L	250	RHV 6LR-ED	1/8 BSP	6	
		RHV 8LR-ED	1/4 BSP	8	
		RHV 10LR-ED	1/4 BSP	10	
		RHV 12LR-ED	3/8 BSP	12	
		RHV 15LR-ED	1/2 BSP	15	
	160	RHV 18LR-ED	1/2 BSP	18	
		RHV 22LR-ED	3/4 BSP	22	
		RHV 28LR-ED	1 BSP	28	
		RHV 35LR-ED	1 1/4 BSP	35	
	100	RHV 42LR-ED	1 1/2 BSP	42	
		RHV 6SR-ED	1/4 BSP	6	
		RHV 8SR-ED	1/4 BSP	8	
		RHV 10SR-ED	3/8 BSP	10	
		RHV 12SR-ED	3/8 BSP	12	
RHV 14SR-ED		1/2 BSP	14		
S	400	RHV 16SR-ED	1/2 BSP	16	
		RHV 20SR-ED	3/4 BSP	20	
		RHV 25SR-ED	1 BSP	25	
		RHV 30SR-ED	1 1/4 BSP	30	
		RHV 38SR-ED	1 1/2 BSP	38	
	250	RHV 6LM-ED	M 10x1	6	
		RHV 8LM-ED	M 12x1,5	8	
		250	RHV 10LM-ED	M 14x1,5	10
			RHV 12LM-ED	M 16x1,5	12
			RHV 15LM-ED	M 18x1,5	15
L	160	RHV 18LM-ED	M 22x1,5	18	
		RHV 22LM-ED	M 26x1,5	22	
		RHV 28LM-ED	M 33x2	28	
	100	RHV 35LM-ED	M 42x2	35	
		RHV 42LM-ED	M 48x2	42	
		RHV 6SM-ED	M 12x1,5	6	
		RHV 8SM-ED	M 14x1,5	8	
	400	RHV 10SM-ED	M 16x1,5	10	
		RHV 12SM-ED	M 18x1,5	12	
		RHV 14SM-ED	M 20x1,5	14	
RHV 16SM-ED		M 22x1,5	16		
RHV 20SM-ED		M 27x2	20		
RHV 25SM-ED		M 33x2	25		
S	250	RHV 30SM-ED	M 42x2	30	
		RHV 38SM-ED	M 48x2	38	

Industrial Valves - Check Valves

In-Line Check Valves - DIN 2353 Connection Type RHZ - Male Stud Check Valves (Flow towards male stud end)



Series	Bar	Part Number	Male Stud Thread	Tube (mm)
L	250	RHZ 6LR-ED	1/8 BSP	6
		RHZ 8LR-ED	1/4 BSP	8
		RHZ 10LR-ED	1/4 BSP	10
		RHZ 12LR-ED	3/8 BSP	12
		RHZ 15LR-ED	1/2 BSP	15
	160	RHZ 18LR-ED	1/2 BSP	18
		RHZ 22LR-ED	3/4 BSP	22
		RHZ 28LR-ED	1 BSP	28
	100	RHZ 35LR-ED	1 1/4 BSP	35
		RHZ 42LR-ED	1 1/2 BSP	42
		RHZ 6SR-ED	1/4 BSP	6
		RHZ 8SR-ED	1/4 BSP	8
		RHZ 10SR-ED	3/8 BSP	10
		RHZ 12SR-ED	3/8 BSP	12
	S	400	RHZ 14SR-ED	1/2 BSP
RHZ 16SR-ED			1/2 BSP	16
RHZ 20SR-ED			3/4 BSP	20
RHZ 25SR-ED			1 BSP	25
250		RHZ 30SR-ED	1 1/4 BSP	30
		RHZ 38SR-ED	1 1/2 BSP	38
250		RHZ 6LM-ED	M 10x1	6
		RHZ 8LM-ED	M 12x1,5	8
		RHZ 10LM-ED	M 14x1,5	10
		RHZ 12LM-ED	M 16x1,5	12
	RHZ 15LM-ED	M 18x1,5	15	
	RHZ 18LM-ED	M 22x1,5	18	
L	160	RHZ 22LM-ED	M 26x1,5	22
		RHZ 28LM-ED	M 33x2	28
		RHZ 35LM-ED	M 42x2	35
	100	RHZ 42LM-ED	M 48x2	42
		RHZ 6SM-ED	M 12x1,5	6
		RHZ 8SM-ED	M 14x1,5	8
		RHZ 10SM-ED	M 16x1,5	10
		RHZ 12SM-ED	M 18x1,5	12
		RHZ 14SM-ED	M 20x1,5	14
	400	RHZ 16SM-ED	M 22x1,5	16
		RHZ 20SM-ED	M 27x2	20
		RHZ 25SM-ED	M 33x2	25
RHZ 30SM-ED		M 42x2	30	
250		RHZ 30SM-ED	M 42x2	30

C2 Series - Right Angle Check Valves

EATON Vickers



Part Number	Max Rated Flow (l/m)	Δp at Rated Flow (Bar)	Port Type	Operating Pressure (Bar)	Cracking Pressure Bar (PSI)
C2-800 S12	12	1.2	1/4" BSP	210	0.35 (5)
C2-805-S12	23	1.4	3/8" BSP	210	0.35 (5)
C2-815 S12	60	1.4	3/4" BSP	210	0.35 (5)
C2-820-S12	105	0.95	1" BSP	210	0.35 (5)
C2-825-S12	170	1.6	1 1/4" BSP	210	0.35 (5)
C2-830-S12	245	1.02	1 1/2" BSP	210	0.35 (5)
C2-800 S3	12	1.2	1/4" BSP	210	3.5 (50)
C2-805-S3	23	1.4	3/8" BSP	210	3.5 (50)
C2-815 S3	60	1.4	3/4" BSP	210	3.5 (50)
C2-820-S3	105	0.95	1" BSP	210	3.5 (50)
C2-825-S3	170	1.6	1 1/4" BSP	210	3.5 (50)
C2-830-S3	245	1.02	1 1/2" BSP	210	3.5 (50)
C2-800 S8	12	1.2	1/4" BSP	210	5.2 (75)
C2-805-S8	23	1.4	3/8" BSP	210	5.2 (75)
C2-815 S8	60	1.4	3/4" BSP	210	5.2 (75)
C2-820-S8	105	0.95	1" BSP	210	5.2 (75)
C2-825-S8	170	1.6	1 1/4" BSP	210	5.2 (75)
C2-830-S8	245	1.02	1 1/2" BSP	210	5.2 (75)

Pipe mounted right angle check valves with poppet type sealing. The "S12" version is supplied with a threaded plug in the poppet which can be drilled to provide a small flow restriction in the closed condition

Industrial Valves - Check Valves

DICPFS Series - In-Line SAE Flange Mounted Check-valves

EATON Vickers



Part Number	Max Rated Flow (l/m)	Δp at Rated Flow (Bar)	Port Type	Operating Pressure (Bar)	Cracking Pressure Bar (PSI)
DICPFS 06 05 10	120	1.4	3/4" SAE Flange (Code 61-3000psi)	350	0.35 (5)
DICPFS 08 05 10	300	3.4	1" SAE Flange (Code 61-3000psi)	350	0.35 (5)
DICPFS 10 05 10	600	8.3	1 1/4" SAE Flange (Code 61-3000psi)	280	0.35 (5)
DICPFS 12 05 10	750	4.1	1 1/2" SAE Flange (Code 61-3000psi)	207	0.35 (5)
DICPFS 06 25 10	120	1.4	3/4" SAE Flange (Code 61-3000psi)	350	1.7 (25)
DICPFS 08 25 10	300	3.4	1" SAE Flange (Code 61-3000psi)	350	1.7 (25)
DICPFS 10 25 10	600	8.3	1 1/4" SAE Flange (Code 61-3000psi)	280	1.7 (25)
DICPFS 12 25 10	750	4.1	1 1/2" SAE Flange (Code 61-3000psi)	207	1.7 (25)
DICPFV 12 25 10	750	4.1	1 1/2" SAE Flange (Code 62-6000psi)	350	1.7 (25)

Flange mounted check valves can be mounted directly onto pump flanges.