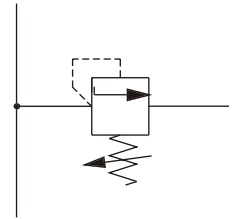


Mobile Valves - Pressure Control

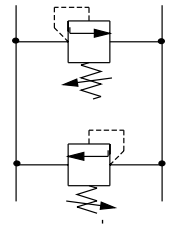
VMDR Series - Direct Acting In-Line Relief Valves



Part Number	Port Size	Max Rated Flow	Pressure Setting Range
VMDR10140C3	1/4" BSP	20 l/min	210 Bar
VMDR40380C3	3/8" BSP	40 l/min	300 Bar
VMDR40120C3	1/2" BSP	40 l/min	300 Bar
VMDR90120C3	1/2" BSP	80 l/min	300 Bar
VMDR90340C3	3/4" BSP	80 l/min	350 Bar

Direct acting relief valves are used to limit the pressure within a hydraulic circuit

DCF Series - Double Cross Line Direct Acting Relief Valves



Part Number	Port Size	Rated Flow	Pressure Setting Range
DCF1202	1/2" BSP	40 l/min	210 Bar
DCF1203	1/2" BSP	40 l/min	350 Bar

Double cross line direct acting relief valves are typically used to protect a hydraulic motor or cylinder from load-induced pressure surges